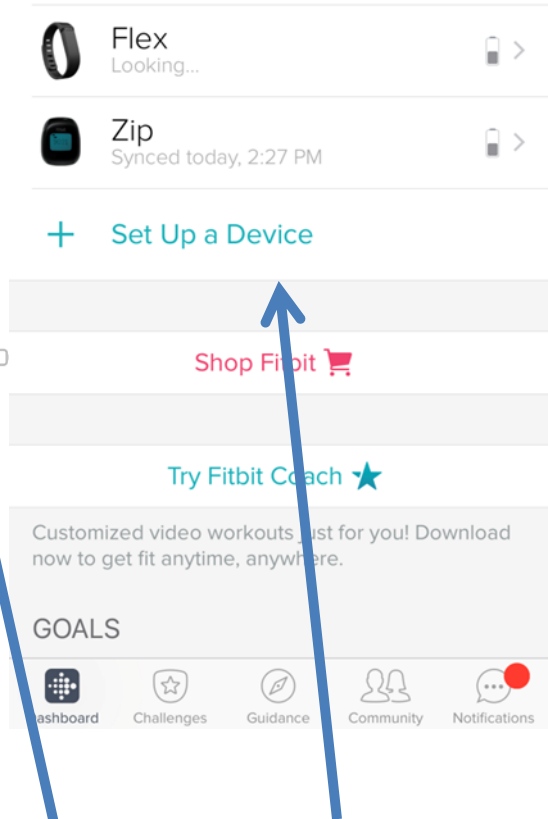


2. New Fitbit users click “Join Fitbit” and follow the instructions. If you have an existing Fitbit account click “Log In”

3. For new Fitbit users you will set up your device when you create your new account.

1. Go to the App store (Apple) and search and download the “Fitbit” app.
Android: Go to the Google Play store and download the “Fitbit” app.



4. If you have a Fitbit device you want to add to your Fitbit account Click here and then select “Set Up a Device”

Contact:
support@Lifebux.com for additional help.